

DUO PIPE STAND

Heavy duty four leg height adjustable, pin lock pipe stands



The B&B Duo pipe stand accommodates pipes up to 48", is height adjustable and equipped with quick change style heads.

The Duo pipe stand has locking brakes on the wheels to secure the load for marking, layout or fit-up and is now supplied with folding legs as standard for ease of use and transport and has an ultra safe pin locking design.

**NEW
IMPROVED
PIN LOCK
DESIGN**



Features and Advantages

- Load capacity 5,290 lbs. / 2,400 kg
- Folding legs for ease of transport and storage
- Self-centering head adjustment from either side
- Height adjustable 29 - 42.5" / 74.5 - 108 cm
- 2 - 48" / 51 - 1,219 mm pipe diameter capacity
- Quick height adjustment with additional fine thread for workpiece levelling
- 'Trued' wheels eliminate 'corkscrewing' of pipe during rotation
- Lockable wheels to hold pipe in position
- Safety pins to lock stand at working height
- CE conformity certified with CE mark



The Duo pipe stand utilises a fine adjustment thread. This allows precise adjustment of the working height and can compensate for uneven surfaces to ensure the pipe is level at all times.



The unique safety locking pins allow the Duo pipe stand to be fixed at various working heights.



Final adjustment and levelling can then be made with the fine adjustment handle.

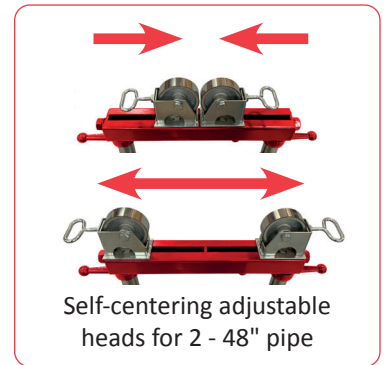
DUO PIPE STAND OPTIONS

The quick change style heads increase the versatility of the Duo pipe stand. The heads can be changed without tools in a matter of seconds to adapt to almost all applications. Roller wheels are available in steel, stainless steel or phenolic version. Ball transfer heads are available in steel or stainless steel.

Simple head changeover



Various height holes enable the operator to fix the stand at the required working height using the safety locking pins

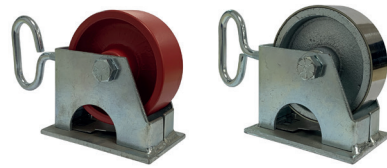


DESCRIPTION: Duo pipe stand (base unit only)



OLD PART NO	NEW PART NO	LOAD CAPACITY		WEIGHT	
DPS200	90039	5,290 lbs.	2,400 kg	46.30 lbs.	21.00 kg

DESCRIPTION: Quick change steel/stainless steel wheel heads (pair)



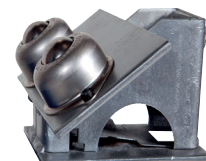
OLD PART NO	NEW PART NO	LOAD CAPACITY		WEIGHT	
SWH200	90065	5,290 lbs.	2,400 kg	6.60 lbs.	3.00 kg
* SWH200SS	* 90066	5,290 lbs.	2,400 kg	6.60 lbs.	3.00 kg

DESCRIPTION: Quick change phenolic wheel heads (pair)



OLD PART NO	NEW PART NO	LOAD CAPACITY		WEIGHT	
* NWH200	* 90067	1,000 lbs.	450 kg	4.90 lbs.	2.20 kg

DESCRIPTION: Quick change stainless steel ball transfer heads (pair)



OLD PART NO	NEW PART NO	LOAD CAPACITY		WEIGHT	
* BTH200SS	* 90068	3,197 lbs.	1,450 kg	6.60 lbs.	3.00 kg

* Suitable for stainless steel